



BRAG™ Antenna Ranking of Schools

Can you BRAG about your school?

Part Three

Method or What we did

- ✓ BRAG™ Color Code . . .
- ✓ BRAG™ Grade & Ranking



John Adams

*Liberty cannot be preserved
without general knowledge
among people.*



BRAG™ Antenna Ranking of Schools

Table of Contents

Part One: Executive Summary . . .

Part Two: Background . . .

Part Three: Method or What we did . . . 🙄

Part Four: Results . . .

Part Five: BRAG™ Recommendations for Schools . . .

Part Six: Sources & Links . . .



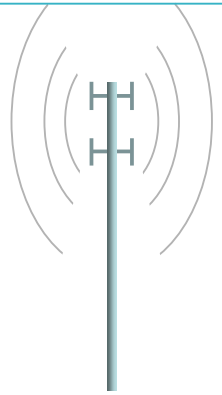
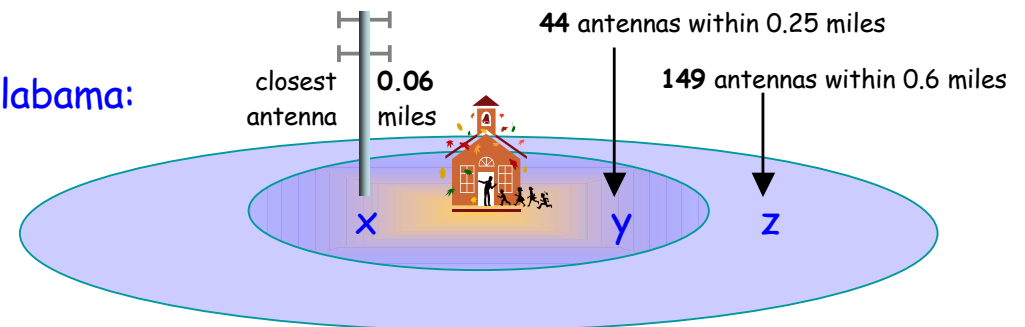
BRAG™ Antenna Ranking of Schools



What we did . . .

- ❑ We identified schools and obtained street addresses for each school in each state capitol and in Washington, D.C. using www.greatschools.com and www.50states.com.
- ❑ We went to www.antennasearch.com, which lists antennas within a 4 to 8 mile radius of a particular address, and entered the school addresses for each school.
- ❑ We recorded the distance of the closest antenna to each school (total of 6,140 schools) and counted the number of antennas within a radius of 0.25 miles (400 meters) and 0.6 miles (1 km). These distances were chosen because they correspond to the scientific literature values for distances from cell phone antennas at which adverse health effects are documented.

- ❑ The example to the right is of Montgomery, Alabama: The closest antenna (x) to any school is at 0.06 miles. The most antennas within 0.25 miles (y) of a school is 44 and the most within 0.6 miles (z) is 149.



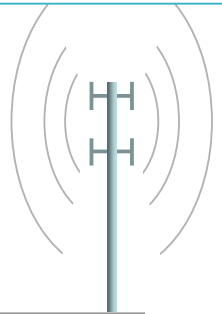


BRAG™ Antenna Ranking of Schools



BRAG™ Color Code

This is how we color coded schools based on nearby antennas.



- We designed the BRAG™ Color Code (red, amber, green and black) to provide a way to compare schools visually for each of the 3 distances (x, y, z).

			antennas
B		Black	most
R		Red	more
A		Amber	some
G		Green	few

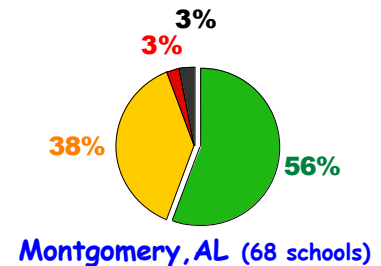
BRAG Color Code	Closest Antenna distance (miles)	Number of Antennas within		BRAG Color Code for each school
	x	0.25 miles y	0.6 miles z	
Black	≤ 0.06 mi	≥ 13	≥ 76	median of x,y,z
Red	0.061 - 0.25 mi	6 - 12	31 - 75	
Amber	0.26 - 0.6 mi	1 - 5	6 - 30	
Green	> 0.6 mi	0	≤ 5	

- We assigned the BRAG™ Color Code for each distance (x, y, z) and used the middle value (median) to classify the school (see examples to the right).

Examples:	x	y	z	color code
school A	0.4	0	42	A: amber
school B	0.02	8	50	R: red
school C	0.8	0	0	G: green

In these examples, School A is classified as **amber**, School B as **red**, and School C as **green**.

- Once the schools were classified according to color, we calculated the percentage of schools within a state capitol for each of the 4 BRAG™ Color Codes (Black, Red, Amber, Green) (shown as a pie chart here for Montgomery, AL). The color category with the largest percentage of schools was designated the "State Capitol Color". Montgomery is classified as **green** because 56% of the schools in Montgomery were BRAG™ Green.





BRAG™ Antenna Ranking of Schools



State Capitol BRAG™ Grade & Ranking

- To determine a **composite grade** for the state capitols we calculated a weighted-average as follows: the percentage of green schools were multiplied by 3; amber schools by 2; red schools by 1; and black schools by 0; and the total was divided by 3 to give a weighted-average value from 0 to 100%. We refer to this as the "**State Capitol BRAG™ Grade**".



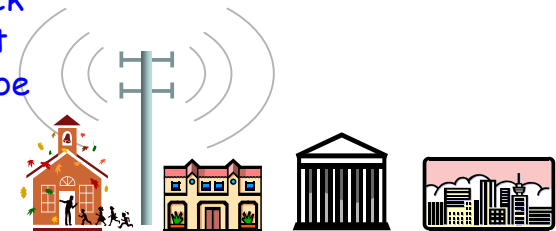
Grade-State Capitol

- We used the "**State Capitol BRAG™ Grade**" to rank all the 50 state capitols as well as Washington D.C. for comparison purposes. The Capitols were ranked in order from best (1) to worst (51) according to grade and the xyz distances and this provided the "**State Capitol BRAG™ Rank**".



Can your school BRAG?
Ranked ? BEST US state capitol.

- The "**BRAG™ Color Code**" and the "**State capitol BRAG™ Grade**" enables quick comparison of schools and cities and is based on just three simple metrics that provide information on density and proximity of antennas. These metrics can be applied to any location including hospitals, nursing homes, fire stations, and residences.



For information about what you can do to minimize exposure to microwave radiation for your school environment see [BRAG™ Recommendations for Schools.](#)